

This manual is for reference and historical purposes, all rights reserved.

This page is copyright© by M. Butkus, NJ.

This page may not be sold or distributed without the expressed permission of the producer

I have no connection with any camera company

On-line camera manual library

This is the full text and images from the manual. This may take 3 full minutes for the PDF file to download.

If you find this manual useful, how about a donation of \$3 to: M. Butkus, 29 Lake Ave., High Bridge, NJ 08829-1701 and send your e-mail address so I can thank you. Most other places would charge you \$7.50 for a electronic copy or \$18.00 for a hard to read Xerox copy.

This will allow me to continue to buy new manuals and pay their shipping costs.

It'll make you feel better, won't it?

**If you use Pay Pal or wish to use your credit card,
click on the secure site on my main page.**

K O D A K



KODAKS
AND KODAK
SUPPLIES



1928

EASTMAN KODAK COMPANY

ROCHESTER, NEW YORK

The Kodak City



Enlarged from negative made with a 3A Autographic Kodak *Special*
equipped with Kodak Anastigmat lens *f.6.3*

MODERN KODAKS

PICTURES in the rain? . . . impossible! Snapshots indoors? . . . it can't be done! A few years ago you might have said it.

But today, with a Modern Kodak, you can take pictures under conditions that might have discouraged even experts a short time ago.

Important developments in the manufacture of lenses have made possible these remarkable photographic results.

Today, due to Eastman enterprise and the tremendous Eastman manufacturing resources, you can get extra-rapid, extra-efficient lenses on cameras of moderate price.

For example, on the \$20 1A Pocket Kodak is now supplied a lens that in 1925 was not available on any camera selling for less than \$40.

To you, this not only means better pictures. It also means that your photographic day is lengthened . . . picture opportunities are multiplied many times. It is no longer necessary to have your subject in direct sunlight. You can make pictures in the shade . . . indoors under favorable light conditions . . . on rainy days. Pictures you never previously thought of taking are simple snapshots now.

The Modern Kodak is simplicity itself. Everything possible has been made automatic. Things to adjust have been reduced to a minimum. Thus picture-making, good picture-making, through the medium of the Modern Kodak, has been made easier than ever before.

Read about the Modern Kodak in the pages that follow.

EXCLUSIVELY EASTMAN

With a Kodak—and with no other camera—you can write the date and title on the film at the time.

This feature is invaluable for certain types of pictures. No picture of a child,

for example, is complete without the date. For travel pictures, either at home or abroad, the name of the place is essential.

The Autograph feature is just another example of Kodak completeness.

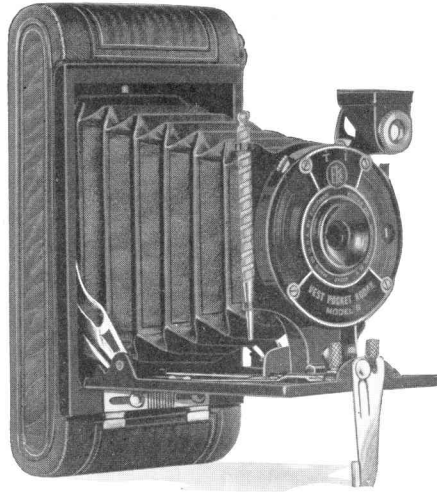
KODAKERY AND THE SERVICE DEPARTMENT

The Eastman Kodak Company's interest in the amateur does not end with the sale of a camera—quite the contrary. A case in point is KODAKERY, a fully illustrated monthly magazine on amateur photography which is sent free to all purchasers of Kodak, Brownie or Hawk-Eye cameras who simply sign the coupon in the

manual and then mail it in to Rochester.

Another instance is the Service Department, with its corps of experts who invite questions on photographic subjects and answer them fully in personal letters.

There's just one reason for KODAKERY and the Service Department—Eastman's desire to serve.



VEST POCKET KODAK, *MODEL B*

PICTURE SIZE

$1\frac{5}{8} \times 2\frac{1}{2}$

LOOK at it, actual size, on the opposite page. You can hide it with your hand—a practical, dependable picture maker and yet so small that you can wear it like a watch. There's always a place for the V. P. K. and chances to use it are constantly springing up. You'll want it with you—always.

Model B Vest Pocket Kodak is amazingly easy to use. In the first place, loading is simplified. Then the focus is fixed so you needn't disturb yourself over distance. Sight the subject, press the release and the picture's made. That's about all there is to it.

Because of its instant availability—the fact that it's out of the pocket and “on the point” so to speak before the picture chance has time to get away, amateurs who include the Vest Pocket Kodak in their photographic equipment have more than ordinarily interesting albums. They have usually managed to secure a number of snapshots

quite out of the common run—street incidents, for example, and “off guard” pictures about the neighborhood.

Its price at \$5 looks low—and it is.

It's simply the result of careful planning by Eastman engineers, coupled with high-gearred, quantity production.

The V. P. K., Model B, is good looking with its smart iridescent finish.

Women fancy it and slip it in their handbags. Men like it and tuck it in their vest pockets.

Both take it with them wherever they go.

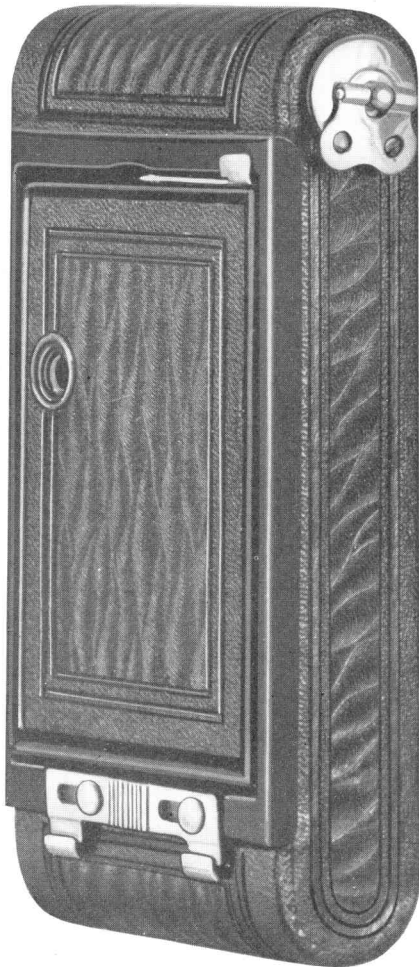
Vest Pocket Kodak, Model B, like all Kodaks, is autographic.

DETAILS

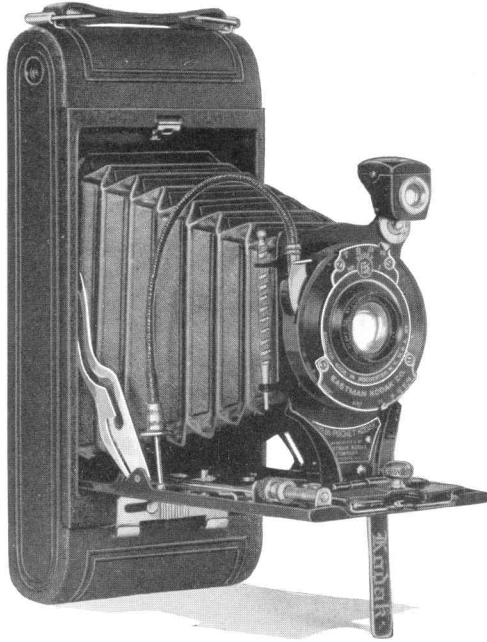
Capacity without reloading: 8 exposures. Focus: Fixed. Lens: Meniscus. Shutter: Vest Pocket Rotary, with four stops, *instantaneous* and *time* actions. Brilliant finder, reversible for vertical or horizontal pictures. Body: All metal, with covering in iridescent finish; fittings finished in nickel and black enamel. One tripod socket, for vertical pictures. Black bellows. Autographic feature.

PRICES

Vest Pocket Kodak, Model B, with Meniscus Lens and Vest Pocket Rotary Shutter	\$5.00
Black Sole Leather Case, with strap	1.25
Belt Carrying Case (russet leather)	1.25
Autographic Film Cartridge, 8 exposures (No. A 127) . .	.25
Kodak Portrait Attachment (see page 42)75



Actual size, V. P. K., closed



NOS. 1 AND 1A POCKET KODAKS

PICTURE SIZES

No. 1, $2\frac{1}{4} \times 3\frac{3}{4}$; No. 1A, $2\frac{1}{2} \times 4\frac{1}{4}$

HERE are two splendid examples of the Modern Kodak, with which successful picture-making is possible under conditions that might have discouraged even experts a short time ago.

The particular achievement is the lens.

Due to Eastman enterprise you find on either of these cameras extra-fast, extra-efficient lens equipment without a price premium. Specifically, on the \$20 1A Pocket Kodak is now supplied a lens (Kodak Anastigmat *f.6.3*) which in 1925 was not available on any camera under twice that figure—\$40.

This simply means that this faster lens makes possible pictures

indoors under favorable light conditions, snapshots in the rain, in dull light or bright, daylight to dusk.

See these Modern Kodaks at your dealer's. You'll find them worth your while.

Of course, they're autographic.

DETAILS

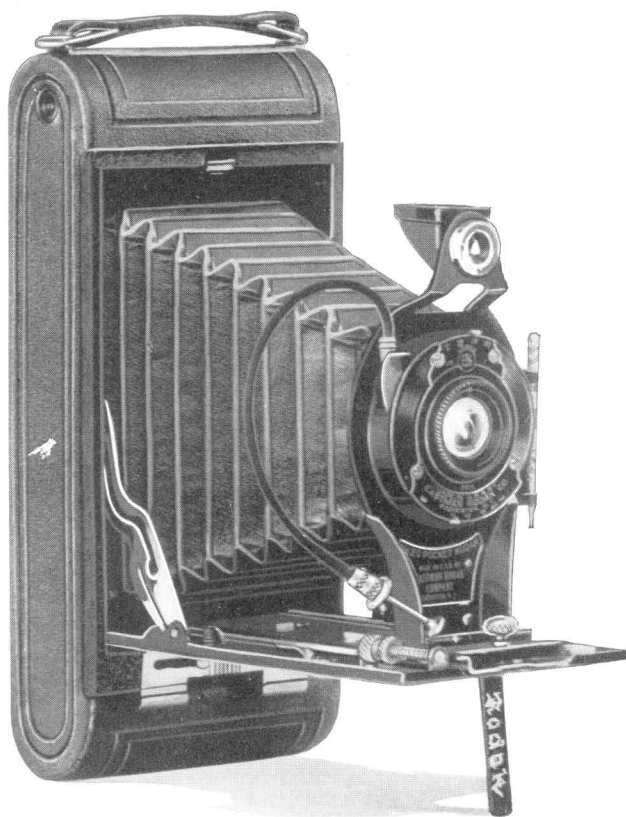
Capacity without reloading: No. 1, 6 exposures; No. 1A, 12 exposures. Focus: Adjustable, with worm-screw focusing device. Lenses: Meniscus Achromatic; Kodar *f*.7.9, 4 $\frac{3}{8}$ -inch focus on No. 1; 5 $\frac{1}{8}$ -inch focus on No. 1A; or Kodak Anastigmat *f*.6.3, 4 $\frac{1}{8}$ -inch focus on No. 1; 5 $\frac{1}{8}$ -inch focus on No. 1A. Shutter: Kodex, speeds $\frac{1}{25}$ and $\frac{1}{50}$ second, with cable and finger release, *time* and *bulb* actions. Brilliant finder, reversible for horizontal or vertical pictures. Two tripod sockets. Body: All metal, durably and smartly covered. Metal parts in nickel and black. Black bellows. Autographic feature.

PRICES

	No. 1	No. 1A
Pocket Kodak, with Meniscus Achromatic Lens and Kodex Shutter	\$11.00	\$12.00
With Kodar Lens <i>f</i> .7.9 and Kodex Shutter	14.00	15.00
With Kodak Anastigmat Lens <i>f</i> .6.3 and Kodex Shutter	19.00	20.00
Levant Grain Leather Case, with strap	2.50	3.00
Autographic Film Cartridge, 12 exposures (No. A 116) for No. 1A60
Ditto, 6 exposures (No. A 120) for No. 1; (No. A 116) for No. 1A25	.30
Kodak Portrait Attachment (see page 42)75	.75
Kodak Portrait Attachment for No. 1 Pocket Kodak, with Meniscus Achromatic lens (see page 42)50	
Kodak Self Timer (see page 52)	1.25	1.25



This picture, actual size, made with 1A Pocket Kodak



NOS. 2C AND 3A POCKET KODAKS

PICTURE SIZES

No. 2C, $2\frac{7}{8} \times 4\frac{7}{8}$; No. 3A, $3\frac{1}{4} \times 5\frac{1}{2}$

MUCH has been accomplished in these Modern Kodaks, not only in making picture-making easier but in lengthening the photographer's day.

For this the lens is responsible. Both the 2C and the 3A may be obtained equipped with a fast lens, Kodak Anastigmat $f.6.3$, at a price

that is moderate to say the least. Actually, equipment to match this would have cost twice as much not so long ago.

The Modern Kodak is an Eastman achievement. It gives the amateur what he has long wanted—fast lens equipment without marked price increase.

DETAILS

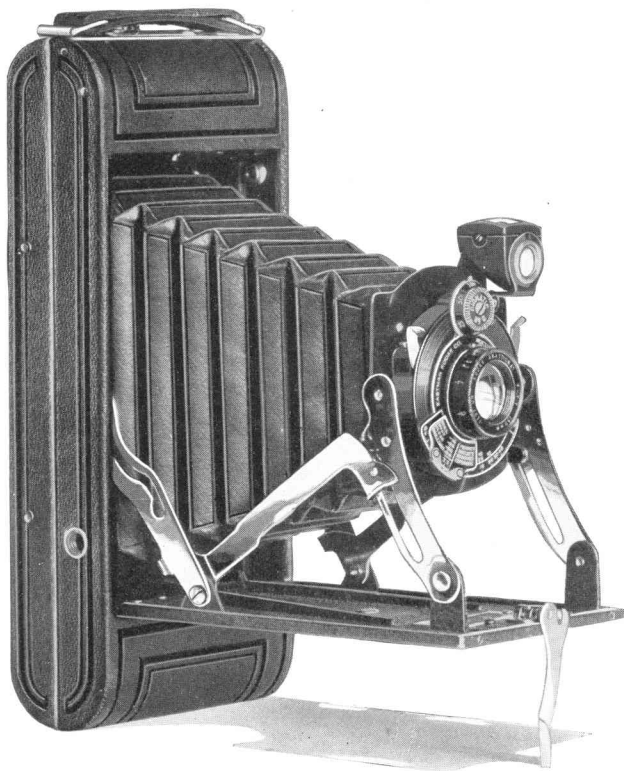
Capacity without reloading: 10 exposures. Focus: Adjustable, with worm-screw focusing device. Lenses: Meniscus Achromatic; Kodak *f*.7.9, 6 $\frac{1}{8}$ -inch focus on No. 2C; 6 $\frac{7}{8}$ -inch focus on No. 3A; or Kodak Anastigmat *f*.6.3, 6-inch focus on No. 2C; 6 $\frac{7}{8}$ -inch focus on No. 3A. Shutters: Kodex, speeds $\frac{1}{25}$ and $\frac{1}{50}$ second; Kodak Ball Bearing, speeds $\frac{1}{25}$, $\frac{1}{50}$ and $\frac{1}{100}$ second; both with cable and finger release, *time* and *bulb* actions. Brilliant finder, reversible for horizontal or vertical pictures. Two tripod sockets. Body: Aluminum, durably and smartly covered, with metal parts in nickel and black enamel. Black bellows. Autographic feature.

PRICES

	No. 2C	No. 3A
Pocket Kodak, with Meniscus Achromatic Lens and Kodex Shutter	\$15.00	\$17.00
With Kodak Lens <i>f</i> .7.9 and Kodex Shutter	18.00	20.00
With Kodak Anastigmat Lens <i>f</i> .6.3 and Kodak Ball Bearing Shutter	23.00	25.00
Levant Grain Leather Case, with strap	3.50	3.75
Autographic Film Cartridge, 10 exposures (No. A 130) for No. 2C; (No. A 122) for No. 3A75	.90
Ditto, 6 exposures45	.55
Kodak Portrait Attachment (see page 42)75	.75
Kodak Self Timer (see page 52)	1.25	1.25



Reduced from a negative made with 2C Pocket Kodak, with Kodak Anastigmat lens f.6.3



NOS. I AND IA POCKET KODAKS SERIES II

PICTURE SIZES

No. 1, $2\frac{1}{4} \times 3\frac{1}{4}$; No. 1A, $2\frac{1}{2} \times 4\frac{1}{4}$

As you open the camera, the lens automatically springs into picture-making position—a saving of seconds where seconds count. You get the picture before it goes.

Series II Kodaks are clever in construction and, covered as they are with pin grain cowhide, smart in appearance as well.

The fixed focus models are equipped with Eastman-made lenses and two-speed Kodex shutters.

Focusing models offer two equipments:

Kodak Anastigmat *f.7.7* lens and Diomatic shutter, with exposure scale and four automatic speeds, *bulb* and *time*.

Kodak (semi-anastigmat) *f.7.9* lens and Kodex shutter (speeds 1/25, 1/50 and *bulb* and *time*).

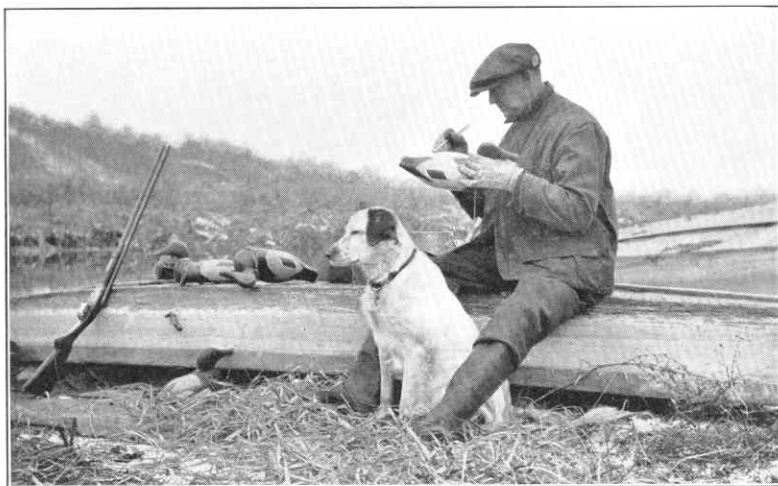
Autographic, of course.

DETAILS

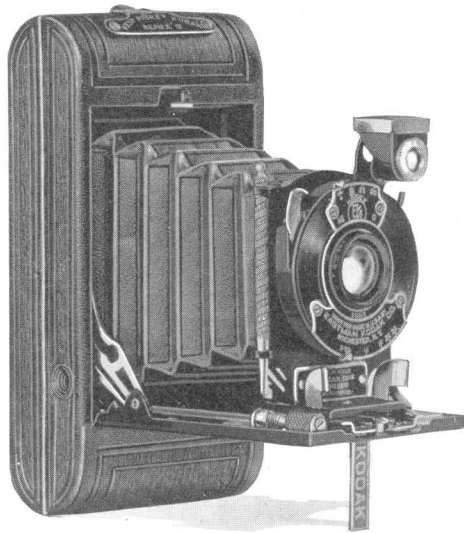
Capacity without reloading: No. 1, 6 exposures; No. 1A, 12 exposures. Focus: Fixed or adjustable. Lenses: Meniscus Achromatic; Kodak *f.7.9*, 4 $\frac{3}{8}$ -inch focus on No. 1; 5 $\frac{1}{4}$ -inch focus on No. 1A; or Kodak Anastigmat *f.7.7*, 4 $\frac{1}{4}$ -inch focus on No. 1; 5-inch focus on No. 1A. Shutters: Kodex, speeds $\frac{1}{25}$ and $\frac{1}{50}$ second; Diomatic, speeds $\frac{1}{10}$, $\frac{1}{25}$, $\frac{1}{50}$ and $\frac{1}{100}$ second; both with finger release, *time* and *bulb* actions. Brilliant finder, reversible for horizontal or vertical pictures. Two tripod sockets. Body: Aluminum, covered with pin grain cowhide; metal parts finished in nickel and black enamel. Black bellows. Autographic feature.

PRICES

Pocket Kodak, Series II (fixed focus), with Meniscus Achromatic Lens and Kodex Shutter	No. 1	No. 1A
Focusing model with Kodak Lens <i>f.7.9</i> , Kodex Shutter	\$15.00	\$17.00
With Kodak Anastigmat Lens <i>f.7.7</i> , and Diomatic Shutter	19.00	21.00
Levant Grain Leather Case, with strap	2.50	3.00
Autographic Film Cartridge, 12 exposures (No. A 116) for No. 1A60
Ditto, 6 exposures (No. A 120) for No. 1; (No. A 116) for No. 1A25	.30
Kodak Portrait Attachment (see page 42)75	.75
Kodak Self Timer (see page 52)	1.25	1.25
Cable Release for Pocket Kodak, Series II, opened35	.35



From a 1A Pocket Kodak, Series II, negative (slightly reduced)



VEST POCKET KODAK, SERIES III

PICTURE SIZE

$1\frac{5}{8} \times 2\frac{1}{2}$

A SMALL camera—small as only a Vest Pocket Kodak can be—yet fully equipped for first-class photography.

For example, like other Modern Kodaks, this model may be obtained with Kodak Anastigmat lens *f*.6.3 without entering a new price range. With a lens like this, your picture-making day is lengthened. Snapshots are possible from daylight to dusk—you can even make them indoors by the window under suitable light conditions.

Excellent support is furnished the Kodak Anastigmat *f*.6.3 by the Diomatic shutter with automatic speeds of 1/10, 1/25, 1/50 and 1/100 second as well as *time* and *bulb* actions.

Vest Pocket Kodak, Series III, is offered as well with Kodar lens *f*.7.9 and Kodex shutter—an excellent combination for all-round work.

The picture size ($1\frac{5}{8} \times 2\frac{1}{2}$) is fully satisfying, but on occasion when larger prints are wanted, the negatives—particularly those

made with Kodak Anastigmat equipment—readily lend themselves to excellent enlargements.

Like the other Vest Pocket Kodaks, the V. P. K., Series III, is smaller than the hand that holds it. That means that men wear it in their waistcoats and women carry it in their handbags. The Vest Pocket Kodak, Series III, can easily become an inseparable companion, whether it be a walk around the block or a trip around the world.

No matter what photographic equipment you may already own, this camera is always a photographic convenience, and frequently—when space is at a premium—a photographic necessity.

Beautifully finished in baby crepe grain cowhide—and autographic, of course.

DETAILS

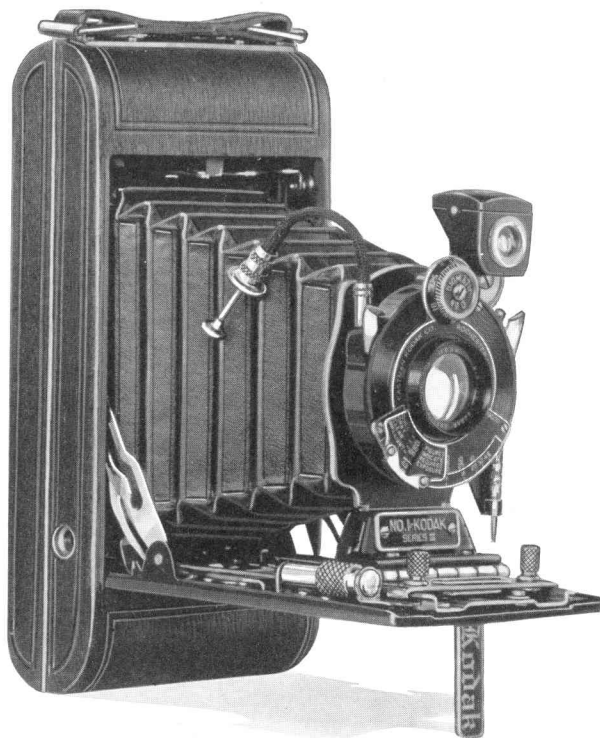
Capacity without reloading: 8 exposures. Focus: Adjustable, with worm-screw focusing device. Lenses: Kodar *f.7.9*, 3 $\frac{3}{8}$ -inch focus; or Kodak Anastigmat *f.6.3*, 3 $\frac{1}{4}$ -inch focus. Shutters: Kodex, speeds $\frac{1}{25}$ and $\frac{1}{50}$ second; or Diomatic, speeds $\frac{1}{10}$, $\frac{1}{25}$, $\frac{1}{50}$ and $\frac{1}{100}$ second. Both with finger release, *time* and *bulb* actions. Brilliant finder, reversible for vertical or horizontal pictures. Two tripod sockets. Body: Aluminum, covered with baby crepe grain cowhide. Metal parts finished in nickel and black enamel. Black bellows. Autographic feature.

PRICES

Vest Pocket Kodak, Series III, with Kodar Lens <i>f.7.9</i> and Kodex Shutter	\$12.00
With Kodak Anastigmat Lens <i>f.6.3</i> and Diomatic Shutter	17.00
Belt Carrying Case, Russet Leather	1.50
Black Leather Carrying Case	1.50
Autographic Film Cartridge, 8 exposures (No. A 127)25
Cable Release for Vest Pocket Kodak, Series III, opened35
Kodak Portrait Attachment (see page 42)75
Kodak Self Timer (see page 52)	1.25



Made with a Vest Pocket Kodak, Series III (actual size)



NOS. I AND IA KODAKS, *SERIES III*

PICTURE SIZES

No. I, $2\frac{1}{4} \times 3\frac{3}{4}$; No. IA, $2\frac{1}{2} \times 4\frac{1}{4}$

SPECIFICALLY the lens equipment on these Series III Kodaks makes it easier for you to get the kind of pictures you really want.

Its speed, $f.6.3$, lengthens your picture-making day. Snapshots are now possible on dull days as well as bright, in rain or sunshine, and even indoors when the light conditions are favorable.

A further help is the exposure guide beneath the lens that tells you what exposure to use.

As companion equipment for this Kodak Anastigmat *f.6.3* is the dependably accurate Diomatic shutter with four automatic speeds of $1/10$, $1/25$, $1/50$ and $1/100$, as well as *time* and *bulb* actions.

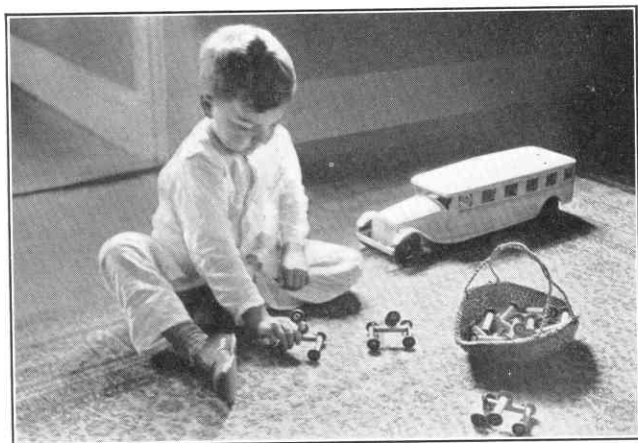
These Kodaks have aluminum bodies covered with baby crepe grain cowhide. In short, they're Modern Kodaks—and look the part. Autographic, of course.

DETAILS

Capacity without reloading: No. 1, 6 exposures; No. 1A, 12 exposures. Focus: Adjustable; screw focusing device. Lens: Kodak Anastigmat *f.6.3*, $4\frac{1}{4}$ -inch focus on No. 1; 5-inch focus on No. 1A. Shutter: Diomatic, speeds $\frac{1}{10}$, $\frac{1}{25}$, $\frac{1}{50}$, $\frac{1}{100}$ second, with *time* and *bulb* actions, cable and finger release. Brilliant finder, reversible for horizontal or vertical pictures. Two tripod sockets. Body: Aluminum, covered with baby crepe grain cowhide; metal parts finished in nickel and black enamel. Rising front on No. 1A. Black bellows. Autographic feature.

PRICES

	No. 1	No. 1A
Kodak, Series III, with Kodak Anastigmat Lens <i>f.6.3</i> and Diomatic Shutter	\$29.00	\$32.00
Levant Grain Leather Case, with strap	2.50	3.00
Autographic Film Cartridge, 12 exposures (No. A 116) for No. 1A.60
Ditto, 6 exposures (No. A 120) for No. 1; (No. A 116) for No. 1A25	.30
Kodak Portrait Attachment (see page 42)75	.75
Kodak Self Timer (see page 52)	1.25	1.25



Made with a No. 1 Kodak, Series III (actual size)



NOS. 3 AND 2C KODAKS, *SERIES III*

PICTURE SIZES

No. 3, $3\frac{1}{4} \times 4\frac{1}{4}$; No. 2C, $2\frac{7}{8} \times 4\frac{7}{8}$

FIRST and foremost—Kodak Anastigmat *f.6.3*.
This is the lens whose speed broadens the picture-making field so that snapshots are possible under bright skies or cloudy ones and even indoors with the subject near a sunlit window.

Kodak Anastigmat lens *f.6.3* and the four-speed, accurate Diomatic shutter stamp these Kodaks as high above the average, yet their cost,

as you see below, is amazingly moderate. They're autographic—like all Kodaks.

DETAILS

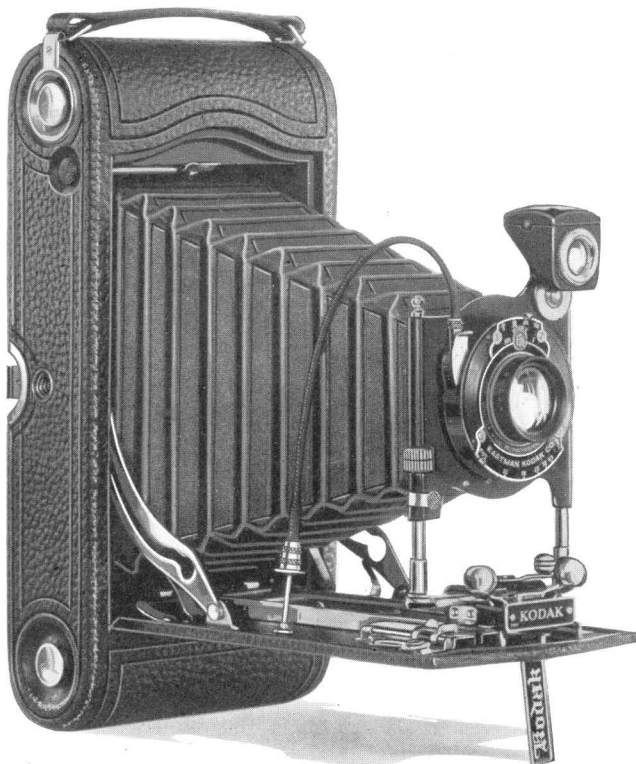
Capacity without reloading: No. 3, 12 exposures; No. 2C, 10 exposures. Focus: Adjustable, with lever focusing device. Lenses: Kodak *f*.7.9, 5 $\frac{1}{8}$ -inch focus on No. 3; or Kodak Anastigmat *f*.6.3, 5-inch focus on No. 3; 6-inch focus on No. 2C. Shutters: Kodex (No. 3 only), speeds $\frac{1}{25}$, $\frac{1}{50}$ second; Diomatic, speeds $\frac{1}{10}$, $\frac{1}{25}$, $\frac{1}{60}$, $\frac{1}{100}$ second; both with cable and finger release, *time* and *bulb* actions. Brilliant finder, reversible for horizontal or vertical pictures. Two tripod sockets. Body: Aluminum, covered with baby crepe grain cowhide; metal parts finished in nickel and black enamel. Rising front. Black bellows. Autographic feature.

PRICES

Kodak, Series III, No. 3	No. 2C	
with Kodar Lens		
<i>f</i> .7.9 and Kodex		
Shutter . . .	\$26.00	
With Kodak Anastigmat Lens <i>f</i> .6.3		
and Diomatic		
Shutter . . .	33.00	\$35.00
Black Sole Leather		
Case, with strap	3.50	3.50
Autographic Film		
Cartridge, 12 exposures (No. A 118) for No. 3;		
10 exposures (No. A 130) for		
No. 2C90	.75
Ditto, 6 exposures		
(No. A 118) for		
No. 3; (No. A 130) for No. 2C.	.45	.45
Kodak Portrait		
Attachment (see		
page 42). . .	.75	.75
Kodak Self Timer		
(see page 52) .	1.25	1.25



*From a negative made with a No. 3 Kodak, Series III
(Reduced in size)*



No. 3A AUTOGRAPHIC KODAK

PICTURE SIZE

$3\frac{1}{4} \times 5\frac{1}{2}$

THE picture size (postcard proportions) has long been a favorite with the amateur. There's room enough for the story, and the shape is pleasing.

Despite the size of the picture, the camera itself is anything but bulky. Carry it in a case over the shoulder, put it in the pocket of

your car or store it in the top of your traveling bag.

Either of two lens equipments is ready for results, but the fast Kodak Anastigmat lens *f.6.3* and seven-speed Ilex Universal shutter broaden the field of picture-making.

As extra equipment, the 3A Autographic Kodak may be fitted with a Combination Back which makes available Kodak Cut Film as negative material.

It's autographic



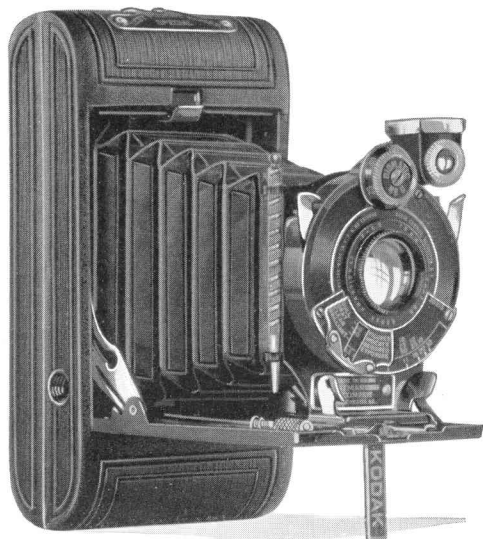
Putting on
the Combination Back

DETAILS

Capacity without reloading: 10 exposures. Focus: Adjustable only, with automatic focusing lock. Double focusing scale for films or plates. Lenses: Kodak *f.7.9*, $6\frac{7}{8}$ -inch focus; or Kodak Anastigmat *f.6.3*, $6\frac{3}{4}$ -inch focus. Shutters: Kodex, speeds $\frac{1}{25}$, $\frac{1}{50}$ second; or Ilex Universal, speeds 1, $\frac{1}{2}$, $\frac{1}{5}$, $\frac{1}{10}$, $\frac{1}{25}$, $\frac{1}{50}$ and $\frac{1}{100}$ second, both with *time* and *bulb* actions, cable and finger release. Brilliant finder, reversible for vertical or horizontal pictures. Two tripod sockets. Body: Back and bed of aluminum, covered with fine seal-grain leather; metal parts finished in nickel and black enamel. Rising, falling and sliding front. Black bellows. Autographic feature.

PRICES

No. 3A Autographic Kodak, with Kodak Lens <i>f.7.9</i> and Kodex Shutter	\$25 00
With Kodak Anastigmat Lens <i>f.6.3</i> , and Ilex Universal Shutter	33.00
Black Sole Leather Case, with strap	4.00
Combination Back for cut film or plates (see page 50)	4.00
Kodak Double Plate Holders, each	1.50
Kodak Cut Film Sheaths, each15
Kodak Cut Film, package of 1290
Kodak Cut Film, <i>Super Speed</i> , package of 12	1.00
Autographic Film Cartridge, 10 exposures (No. A 122).90
Ditto, 6 exposures55
Kodak Portrait Attachment (see page 42)75
Kodak Self Timer (see page 52).	1.25



VEST POCKET KODAK *SPECIAL*

PICTURE SIZE

1 $\frac{5}{8}$ x 2 $\frac{1}{2}$

ANY Kodak will make good pictures. There are Kodaks, however, of superfine equipment that can cope serenely with any situation that's photographically possible.

These are called *Special* Kodaks, and this V. P. K. is Exhibit 1.

In a Kodak that's hardly a handful, you have the lens speed of Kodak Anastigmat *f.4.5* or Kodak Anastigmat *f.5.6* and the accuracy and dependability of the Diomatic shutter.

With equipment like this, the amateur can add hours to his photographic day. Snapshots inside by the window if you like; or outdoors in the rain. Action pictures—the high spots of sports events—are easy to get with the V. P. K. *Special*.

Trig in appearance, with aluminum body and genuine seal leather covering, the Vest Pocket Kodak is a camera you'll be proud to own. Autographic, of course.

Just how so much photographic efficiency can be packed into such small space, only an Eastman engineer could answer. Here is a camera that really does fit the vest pocket or hand bag, with a Kodak Anastigmat lens as fast as *f.5.6* or *f.4.5* and a shutter, with automatic speeds of 1/10, 1/25, 1/50 and 1/100 second, as well as *time* and *bulb* actions. Equipment like this is usually associated with cameras of much larger size. A mechanical and optical achievement—is the V. P. K. *Special*.

DETAILS

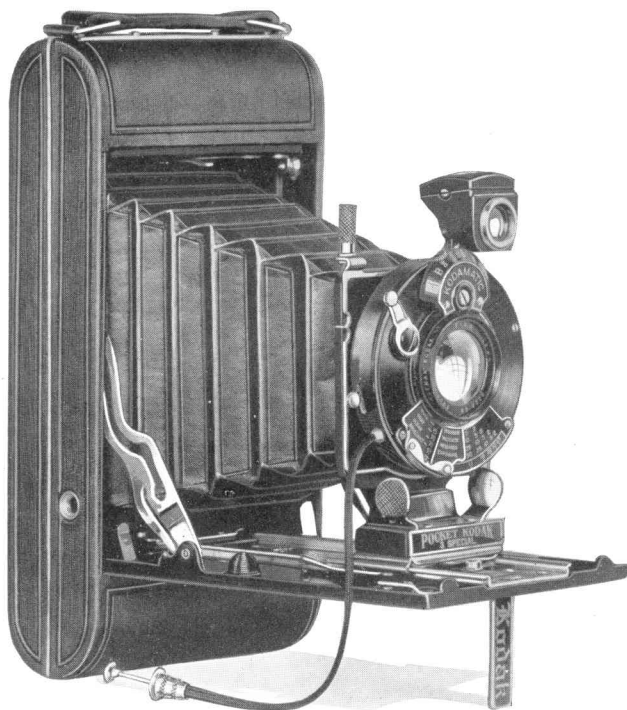
Capacity without reloading: 8 exposures. Focus: Adjustable, with worm-screw focusing device. Lenses: Kodak Anastigmat *f.5.6*, 3 $\frac{3}{8}$ -inch focus; or Kodak Anastigmat *f.4.5*, 3 $\frac{1}{8}$ -inch focus. Shutter: Diomatic, with finger release only; speeds, $\frac{1}{10}$, $\frac{1}{25}$, $\frac{1}{50}$ and $\frac{1}{100}$ second, *time* and *bulb* actions. Brilliant finder, reversible for vertical or horizontal pictures. Two tripod sockets. Body: Aluminum, covered with genuine seal leather; metal parts finished in nickel and black enamel. Black bellows. Autographic feature.

PRICES

Vest Pocket Kodak <i>Special</i> , with Kodak Anastigmat Lens <i>f.5.6</i> and Diomatic Shutter	\$23.00
With Kodak Anastigmat Lens <i>f.4.5</i>	28.00
Belt Carrying Case, Russet Leather, Velvet lined	2.00
Black Leather Carrying Case, Velvet lined	2.00
Autographic Film Cartridge, 8 exposures (No. A 127).25
Cable Release for Vest Pocket Kodak <i>Special</i> , opened35
Kodak Portrait Attachment (see page 42)75
Kodak Self Timer (see page 52)	1.25



*Made with a V. P. K. Special. The man at the wheel
"clicked" the shutter with the aid of a
Kodak Self Timer—page 52.*



Nos. 1, 1A, 2C AND 3 POCKET KODAKS *SPECIAL*

PICTURE SIZES

No. 1, $2\frac{1}{4} \times 3\frac{1}{4}$; No. 1A, $2\frac{1}{2} \times 4\frac{1}{4}$; No. 2C, $2\frac{7}{8} \times 4\frac{7}{8}$; No. 3, $3\frac{1}{4} \times 4\frac{1}{4}$

SUMMED up in a sentence, *Special* Kodaks are just as good hand cameras as it is possible to make. Their high lens speeds fit them for successful picture-making under conditions that put ordinary equipment out of the running.

Specifically, as a basis of comparison, the Kodak Anastigmat lens *f.4.5* offered on the Nos. 1, 1A and 3 *Specials* is three times as fast as the *f.7.7*.

A feature of all four of these *Special* Kodaks is their shutter. The Kodamatic shutter is just as near mechanical perfection as men and machines can go. It's precise to the *n*th degree in all of its seven split-second speeds—an unusual range, by the way, in any hand camera.

With a lens speed of *f*.4.5 or *f*.5.6 and the fast shutter speeds available, these *Specials* are ideally equipped for action pictures.

With bodies of aluminum and covering of genuine sealskin, the *Special* Kodaks are tailored to the most exacting taste.

Autographic.

DETAILS

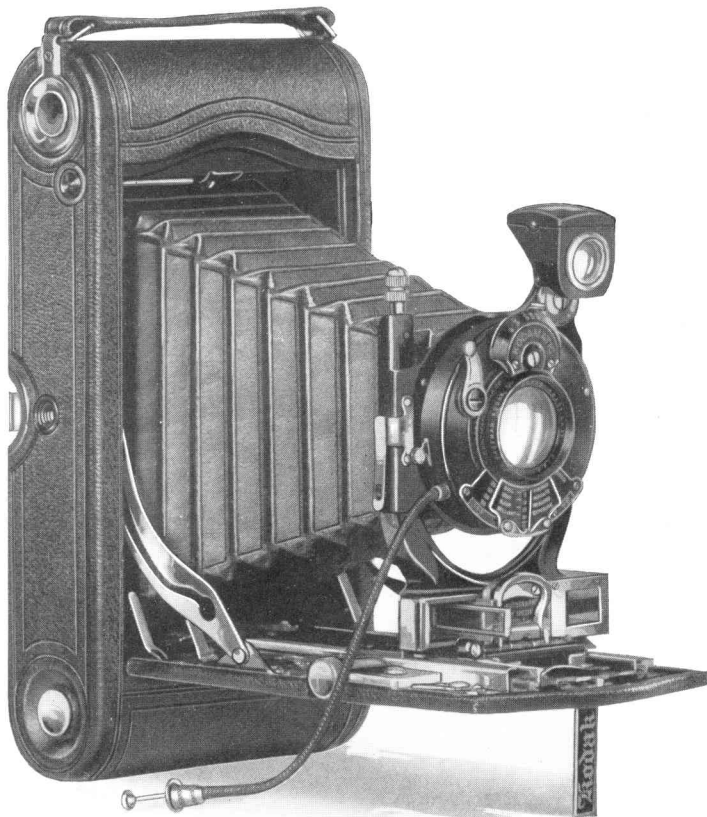
Capacity without reloading: No. 1, 6 exposures; No. 2C, 10 exposures; Nos. 1A and 3, 12 exposures. Focus: Adjustable; screw focusing device on Nos. 1, 1A and 2C; lever focusing device on No. 3. Lenses: Kodak Anastigmat *f*.5.6, 4 $\frac{3}{8}$ -inch focus on No. 1; 5 $\frac{1}{8}$ -inch focus on No. 1A; 6-inch focus on No. 2C; 5 $\frac{1}{8}$ -inch focus on No. 3; or Kodak Anastigmat *f*.4.5, 4-inch focus on No. 1; 5 $\frac{1}{8}$ -inch focus on No. 1A; 5 $\frac{1}{8}$ -inch focus on No. 3. Shutter: Kodamatic, with cable and finger release; seven speeds, from $\frac{1}{450}$ ($\frac{1}{200}$ on No. 1) to $\frac{1}{2}$ second; *rime* and *bulb* actions. Brilliant finder, reversible for horizontal or vertical pictures. Two tripod sockets. Body: Aluminum, covered with genuine sealskin; metal parts finished in nickel and black enamel. Rising front on Nos. 1A, 2C and 3. Range Finder on No. 2C. Black bellows. Autographic feature.

PRICES

	No. 1	No. 1A	No. 2C	No. 3
Pocket Kodak <i>Special</i> , with Kodak Anastigmat Lens <i>f</i> .5.6 and Kodamatic Shutter . . .	\$50.00	\$55.00	\$60.00	\$57.50
With Kodak Anastigmat Lens <i>f</i> .4.5	60.00	65.00		67.50
Grain Leather, Velvet-lined Case, with strap	3.75	4.50	5.00	4.75
Autographic Film Cartridge, 12 exposures (No. A116) for No. 1A; (No. A 118) for No. 3; 10 exposures (No. A 130) for No. 2C		.60	.75	.90
Ditto, 6 exposures (No. A 120) for No. 1; (No. A 116) for No. 1A; (No. A 130) for No. 2C; (No. A 118) for No. 325	.30	.45	.45
Kodak Portrait Attachment (see page 42)75	.75	.75	.75
Kodak Self Timer (see page 52)	1.25	1.25	1.25	1.25



From a No. 3 *Special* Negative



No. 3A AUTOGRAPHIC KODAK *SPECIAL*

PICTURE SIZE
3¼ x 5½

LENS speed—Kodak Anastigmat *f*.6.3—fast enough for snapshots in the rain or even indoors when light conditions are favorable.

Shutter speed—Kodamatic shutter with seven speeds ranging from 1/2 second to 1/150—fast enough for pictures of thrilling action.

That's the 3A Autographic *Special*—a camera you can count on wherever the picture is possible. With the addition of the Combination Back, Kodak Cut Film may be used.

DETAILS

Capacity without reloading: 10 exposures. Focus: Adjustable. Lens: Kodak Anastigmat *f*.6.3, 6 $\frac{5}{8}$ -inch focus. Shutter: Kodamatic, with cable and finger release; seven speeds, from $\frac{1}{150}$ to $\frac{1}{2}$ second, *time* and *bulb* actions. Brilliant finder, reversible for horizontal or vertical pictures. Two tripod sockets. Body: Back and bed of aluminum, covered with genuine Persian Morocco; metal parts finished in nickel and black enamel. Range finder. Rising and falling front. Black bellows. Autographic feature.

PRICES

No. 3A Autographic Kodak <i>Special</i> , with Kodak Anastigmat Lens <i>f</i> .6.3 and Kodamatic Shutter	\$65.00
Grain Leather Velvet-lined Case, with strap	5.25
Combination Back for cut film or plates (see page 50)	5.00
Kodak Double Plate Holders, each	1.50
Kodak Cut Film Sheaths, each15
Kodak Cut Film, package of 1290
Kodak Cut Film, <i>Super Speed</i> , package of 12	1.00
Autographic Film Cartridge, 10 exposures (No. A 122)90
Ditto, 6 exposures55
Kodak Portrait Attachment (see page 42)75
Kodak Self Timer (see page 52)	1.25

No. 3A PANORAM KODAK

PICTURE SIZE

3 $\frac{1}{4}$ x 10 $\frac{3}{8}$

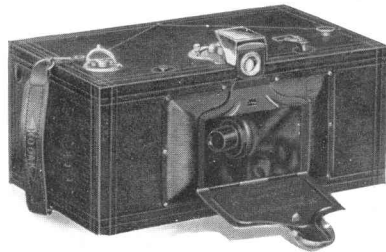
WHETHER it's a broad sweep of landscape or a large group, the Panoram gets the whole view with a single exposure. This camera uses regular 3A Kodak film.

DETAILS

Capacity without reloading: 5 exposures. Focus: Fixed. Lens: Meniscus. Two-speed shutter. Brilliant finder, with hood. Two tripod sockets. Body: Wood, covered with long crepe grain genuine cowhide; metal parts finished in nickel and black enamel. Black bellows. Spirit level.

PRICES

No. 3A Panoram Kodak	\$40.00
Black Sole Leather Carrying Case, with strap	8.00
Kodak Film Cartridge, 5 exposures (No. A 122)90
Ditto, 3 exposures55





THE MAGIC OF MOVIES YOU MAKE YOURSELF

Now, with the Ciné-Kodak, you can make motion pictures with characteristic Eastman ease—real motion pictures of your relatives and friends, your sports, your hobbies, your travels.

Sight the subject in the finder of your Ciné-Kodak and press the release. That's all there is to it—you're making *movies!* There is no tripod; no grinding crank. Every non-essential has been eliminated. And your films are finished at no extra cost to you.

With the Kodoscope projector you show your movies on your own screen just as easily as you have made them with the Ciné-Kodak. Kodoscope plugs in on your house lighting circuit. Turn the switch and the screen leaps into action with the movies *you* have made.

In addition to pictures of your own making, you may purchase for permanent addition to your home movie library, Kodak Cinegraphs of 100-, 200- or 400-foot lengths (see page 32), showing a great variety of entertaining and instructive subjects. Full-length professional motion pictures featuring screenland's most famous stars may be rented at nominal cost from any of several conveniently located branches of the Kodoscope Libraries, Inc.

Ciné-Kodak prices range from \$70 for the Model B, *f.6.5* (page 27), to \$225 for the hand-cranked Model A (page 28). Kodoscope projectors are priced at \$60 for the Model C (page 29), \$180 for the Model A (page 30), to \$300 for the new self-threading Model B (page 31).

CINÉ-KODAK, MODEL B

f.6.5 or f.3.5 Lens Equipment



Ciné-Kodak, Model B, with Kodak Anastigmat lens f.3.5

CINÉ-KODAK, Model B, is the simplest of all personal movie cameras. It is hand-held—no tripod is necessary—and it weighs but five pounds, loaded. It is spring-motor driven and it operates with all the ease characteristic of the Brownie.

Both the *f.6.5* and *f.3.5* models are fixed focus cameras—which means that they are always ready for the unexpected picture possibility. Focusing requires no attention, except

when close-up pictures are desired with the *f.3.5* lens; then a small lever at the left of the lens swings a portrait attachment into position. When pressure on the lever is released, the portrait attachment swings back and the camera is instantly ready for pictures of subjects beyond five feet. No portrait attachment is necessary with the *f.6.5* lens.

All Ciné-Kodaks, Model B, are equipped with two finders—waist height and eye level. This is a special Ciné-Kodak feature which greatly facilitates the making of pictures from proper position.

Ciné-Kodak, Model B, is also equipped with a built-in exposure guide which enables the operator to determine at a glance the proper diaphragm opening for the existing light condition.

PRICES

Ciné-Kodak, Model B, with Kodak Anastigmat Lens <i>f.6.5</i>	\$ 70.00
Ciné-Kodak, Model B, with Kodak Anastigmat Lens <i>f.3.5</i>	100.00
Ciné-Kodak, Model B, <i>f.6.5</i> or <i>f.3.5</i> , Carrying Case (leather)	7.50
Ciné-Kodak, Model B, <i>f.6.5</i> or <i>f.3.5</i> , Combination Carrying Case (Ciné-Kodak and two rolls of film)	10.00

CINÉ-KODAK, MODEL B

f.1.9 Lens Equipment



Ciné-Kodak, Model B, f.1.9 lens

THIS camera is equipped with the ultra-fast Kodak Anastigmat *f.1.9* lens—a lens that is over three times as fast as the *f.3.5* and more than ten times as fast as the *f.6.5*.

Such speed, of course, greatly increases the opportunities for successful outdoor pictures. Movies indoors by the bright light of a window are also easily within the scope of this camera, as are

pictures outdoors on dark, dull days—even in the rain.

PRICES

Ciné-Kodak, Model B, with Kodak Anastigmat Lens <i>f.1.9</i>	\$150.00
Ciné-Kodak, Model B, <i>f.1.9</i> , Carrying Case (leather)	8.50
Ciné-Kodak, Model B, <i>f.1.9</i> , Combination Carrying Case	11.00

CINÉ-KODAK, MODEL A

f.1.9 and f.4.5 Lens Equipment

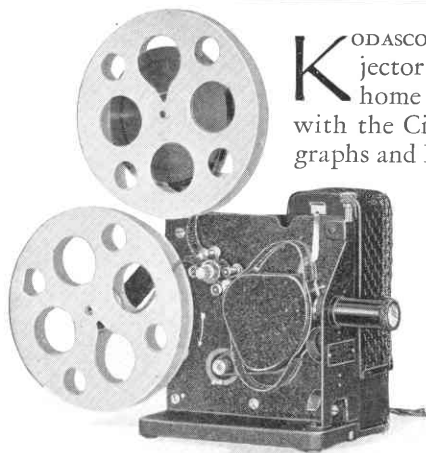
THE hand-cranked Ciné-Kodak, Model A, is the ideal equipment for the advanced amateur. This camera is equipped with the Kodak Anastigmat *f.1.9* lens which is interchangeable with the *f.4.5* (long focus lens for telephoto work).

Extra attachments—slow motion and single picture—still further increase this camera's versatility.

PRICES

Ciné-Kodak, Model A, with Kodak Anastigmat <i>f.1.9</i> Lens (interchangeable with <i>f.4.5</i> [long focus] lens) and tripod	\$225.00
Kodak Anastigmat <i>f.4.5</i> (long focus) Lens	45.00
Single Picture Attachment for Ciné-Kodak, Model A	20.00
Slow Motion Attachment for Ciné-Kodak, Model A	20.00

KODASCOPE, MODEL C



Kodascope, Model C

KODASCOPE is the electrically driven projector that enables you to show on the home screen the pictures you have made with the Ciné-Kodak, as well as Kodak Cinegraphs and Kodascope Library releases.

In simplicity and ease of operation, Kodascope rivals the Ciné-Kodak in every respect. The Model C weighs but nine pounds, and is very compact. It projects a brilliantly illuminated 30 x 40-inch picture at eighteen feet from the screen. It plugs in on the house lighting circuit and is easily threaded. Special rheostats adapted to 210-250-volt lines are available.

Special motors make it possible to use it on 32-volt home generator system. A 6-volt model (hand-cranked), which obtains its illumination from an ordinary storage battery, is also available. Kodascope C has a capacity of 400 feet of 16 mm. (amateur standard) motion picture film, the running time of which is about sixteen minutes.

When the film has run through the projector, a fast working motor driven rewind spins the film back on the supply reel.



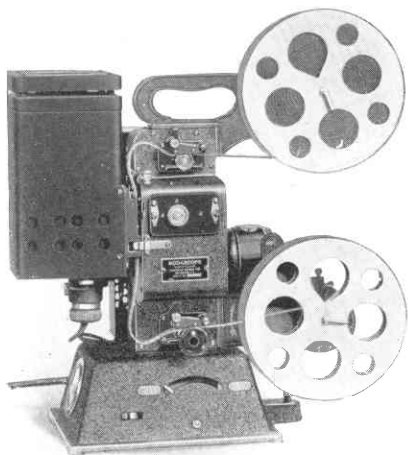
KODASCOPE REWIND

A convenient accessory, especially valuable in editing and titling

PRICES

Kodascope, Model C, with 2-inch lens, coil-coil lamp and one 400-foot reel	\$60.00
Kodascope, Model C, 32-volt, with one 400-foot reel	60.00
Kodascope, Model C (6-volt, operating from storage battery), and one 400-foot reel	60.00
Kodascope, Model C, Carrying Case	5.00
Kodascope Screen, No. 0, mounted in frame with cover	10.00
Kodascope Screen, No. 1 (30 x 40 inches), rollable in case	25.00
Kodascope Screen, No. 1A (30 x 40 inches) demountable in frame	15.00
Kodascope Rewind, including splicing block	7.00
100-watt coil-coil lamp for Kodascope, Model C	3.50
1-inch or 2-inch lens (interchangeable) for Kodascope, Model C	10.00
400-foot Reel and Humidor Can	1.50
Kodascope C Rheostat for 210-250-volt circuits	15.00

KODASCOPE, MODEL A



Kodascope, Model A

For the bigger picture in the classroom, church, or drawing-room, the electrically operated Kodascope, Model A (200 watt), fills every requirement and projects a brilliant 39 x 52-inch picture at 23 feet from the screen.

Like the Model C, this projector can be used on any ordinary house circuit from 105 to 125 volts, either alternating or direct current; or special rheostats to adapt it to other circuits may be obtained.

Many features of the modern professional machines are built into Kodascope A; the current is registered by an ammeter and controlled by a rheostat, and the speed of the mechanism is adjusted by a voltage control.

It is easily and quickly threaded, and has a capacity of 400 feet of 16 mm. (amateur standard) film. A special attachment (\$1.50) makes it possible to stop the mechanism and to view still pictures on the screen. Kodascope, Model A, is regularly fitted with 2-inch lens.

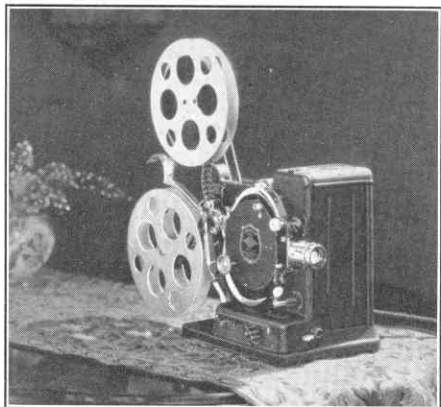
Kodascope, Model A, with 200-watt lamp	\$180.00
Kodascope, Model A, with 5-inch lens	275.00
Carrying Case for Kodascope, Model A, fibre	18.00
No. 2 Kodascope Screen (39 x 52 inches), rollable in case	35.00
1-inch or 2-inch lens (interchangeable) for Kodascope, Model A	15.00
200-watt lamp for Kodascope, Model A	3.75
Kodascope A Rheostat for 210-250-volt circuits	16.50

TITLING AND EDITING SERVICE

Many owners of home motion picture outfits make their own titles and edit their own film. But, for those who prefer to have this done for them, titling and editing services are maintained at Rochester, Chicago and San Francisco.

Motion Picture Titles—per word, \$0.03; minimum charge per title, \$0.25; minimum charge per order	\$1.00
Splicing four 100-foot rolls of Ciné-Kodak Film and supplying 400-foot reel and humidior can.	2.50

KODASCOPE, MODEL B



Kodascope, Model B

KODASCOPE, Model B, represents the ultimate in home motion picture projectors. Many new and unique features, chief of which is its ability to thread itself, have earned for it the appellation, "The projector that's almost human."

To thread Kodascope, Model B, the operator merely slips the squared end of the film into a slot. That's all—the film streams smoothly through and onto the take-up reel and—the show is on!

In addition to the self-threading feature, which is exclusive to Kodascope, Model B, further improvements such as a reversible motor, adjustable rheostat, motor-driven rewind, safety "still" picture attachment, combine to make this projector the finest piece of amateur motion picture equipment ever offered. Kodascope, Model B, stands alone in the home movie projector field.

Kodascope, Model B, is packed in a velvet-lined carrying case, and is furnished with one extra lamp, two 400-foot reels, one humidor can, one splicing outfit and one oiling outfit.

PRICES

Kodascope, Model B, 200-watt, with carrying case, extra lamp, two 400-foot reels, one humidor can, one splicing outfit and one oiling outfit	\$300.00
Kodascope Screen, No. 2 (39 x 52), rollable in case	35.00
Kodascope Rewind and Splicer	7.00
200-watt Lamp, for Kodascope, Model B	3.75

CINÉ-KODAK AND KODASCOPE ACCESSORIES

Unipod for Ciné-Kodak (a handy support for the camera).	\$5.00
Ciné-Kodak Titling Scroll (for making your own titles)	2.50
Ciné-Kodak Scene Records60
Kodascope Film Splicing Outfit	1.50
Kodascope Film Cement 2-ounce can, \$0.50; pint can	1.25